

# shindaiwa®

# RealDual® 500



## Field of Application

- ★★ Construction
- ★★ Fabrication
- ★★ Piping
- ★★ Mining
- ★★ Railroad
- ★★ Offshore
- ★★ Rental
- ★★ Civil Engineering
- ★★ Service Truck
- ★★ Maintenance
- ★★ Repair
- ★★ Farming

★ Excellent ★ Good

## Welding Process

★ Excellent ★ Good • Standard

- CC Mode
- ★★ Cellulose Rod
- ★★ Low Hydrogen Rod
- ★ Scratch TIG
- Gouging 9.5mm

## Specification

### Welding DC Generator

	CC	Single	Dual
Rated Current (A)		480	230
Rated Voltage (V)		39.2	29.2
Duty Cycle (%)		60	80
Current Adj. Range (A)		60-500	30-280
Welding Rod Capacity (mm)		Φ2.6-8.0	Φ2.0-6.0
Gouging Rod (mm)		Φ3.2-9.5	Φ3.2-5.0

	CV	Single	Dual
Rated Current (A)		480	230
Rated Voltage (V)		39.0	22.5
Duty Cycle (%)		60	80
Current Adj. Range (A)		14-40	14-29
Wire Size (mm)		0.6-2.4	0.6-2.0

### AC Generator

Rated Frequency (Hz)	50	
Rated Speed (min <sup>-1</sup> )	3000	
Phase	1-Phase	3-Phase
Rated Output (kVA)	6.6	13.2
Rated Voltage (V)	220	380
Power Factor	1.0	0.8

### Dimensions

Overall Dimensions (mm)	(L)1680 x (W)700 x (H)950
Dry Weight (kg)	613
No Load Voltage (OCV)	MAX85V

## Engine

Powered by	Model	Kubota V1505	Rated Output (kW/min <sup>-1</sup> )	29.0 / 3,600
	Engine Type	Vertical, Water-cooled, 4 cycle diesel	Fuel Tank Capacity (L)	63
	Displacement (L)	1.498		

## Definition of the icons

- REALDUAL Welding Mode
- CC Welding Mode
- Max open circuit voltage
- Easy arc start
- Adjust arc strength between soft and crisp
- Stop engine immediately
- 2 connection of welding remote control
- Preset welding current

DGW500DM-GULF

Control Panel



14. Remote Control Receptacle

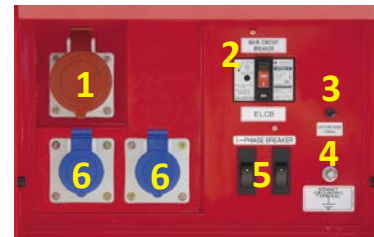


15. 14-pin Connector



- 1. AC Meter
- 2. DC Meter
- 3. Output Control Dial
- 4. Single/Dual Selector Switch
- 5. CV/CC Selector Switch
- 6. Arc Control Dial
- 7. Rod Selector Switch
- 8. Emergency Stop Switch
- 9. Hour Meter
- 10. Monitor Lamp
- 11. Idle Control Switch
- 12. Starter Switch
- 13. Fuel Meter
- 14. Remote Control
- 15. 14-Pin Connector
- 16. Wire Feeder Voltmeter Switch
- 17. 42V/115 Selector Switch
- 18. Circuit Protector For Wire Feeder
- 19. Weld Terminals Switch
- 20. Welding Terminal A
- 21. Welding Terminal B

AC OUTPUT PANEL



- 1. 3-P Receptacle
- 2. Main Breaker
- 3. Earth Grounding Terminal
- 4. Bonnet Grounding Terminal
- 5. 1-P Breaker
- 6. 1-P Receptacle

Product Features

RealDual® DUAL WELDING MODE



Shindaiwa's alternator is unique in coil winding. Welding power A, B, and AC generator are driven respectively by each electrode. This feature ensures two independent welding outputs with least mutual interference.

ROBUST ALTERNATOR



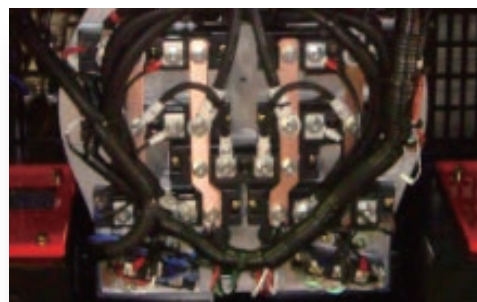
Triple-varnish, standard spec for Shindaiwa's alternator for the global market, offers robust features of protection against sand gravel, dust, rodent, and burnout including layer short.

ARC CONTROL DIAL (CC MODE)



Arc control dials adjust welding arc between mild for capping and crisp for root-pass.

ENHANCED SAFETY



Temperature sensor inside the alternator prevents burnout by detecting anomalous temperature caused by over loading.